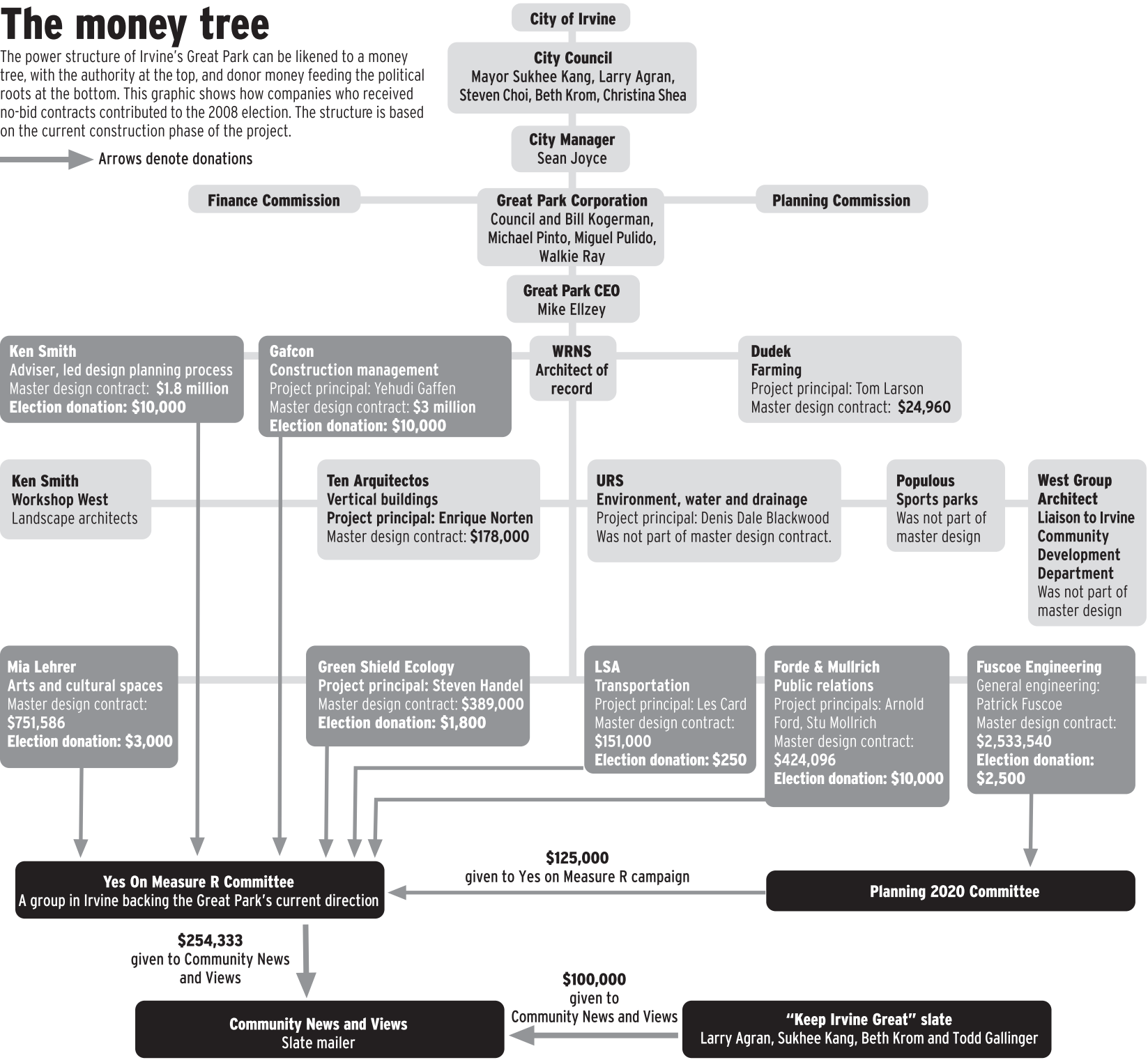


The money tree

The power structure of Irvine's Great Park can be likened to a money tree, with the authority at the top, and donor money feeding the political roots at the bottom. This graphic shows how companies who received no-bid contracts contributed to the 2008 election. The structure is based on the current construction phase of the project.

→ Arrows denote donations



Sources: Campaign disclosures; Great Park contracts